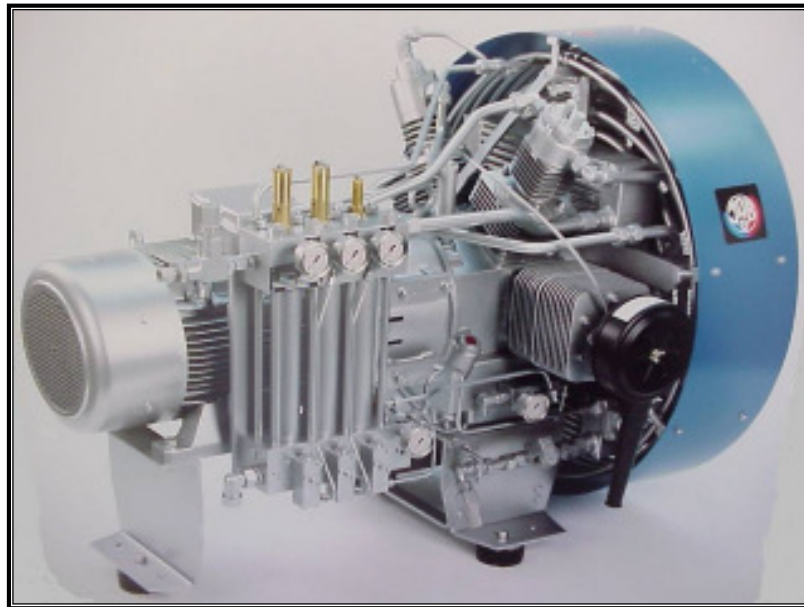
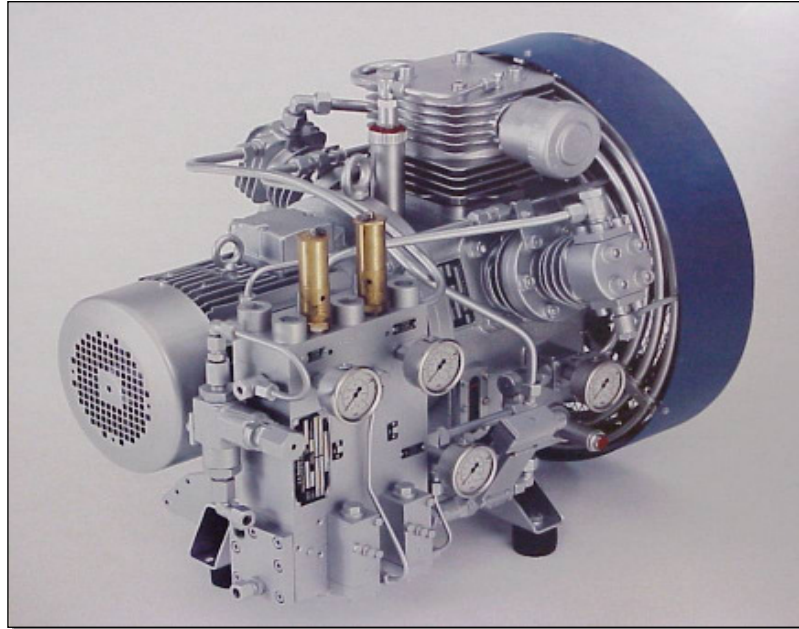


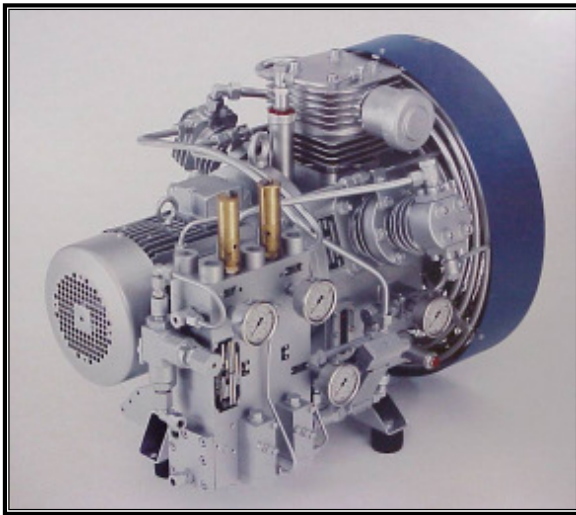
ROHE INTERNATIONAL, INC.

AIR COMPRESSORS FOR H.V. CIRCUIT BREAKERS

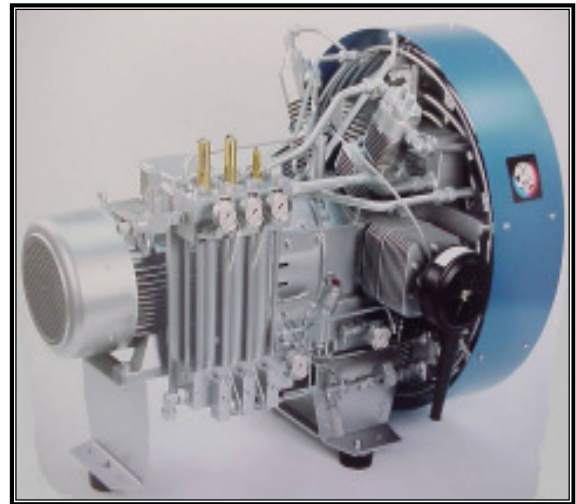


ROHE INTERNATIONAL, INC.
349 NORTHGATE DRIVE; WARRENDALE, PA 15086
PHONE: (724) 933-0260; FAX: (724) 933-0266
E-mail: roheinc@consolidated.net
www.roheinc.com

REPLACEMENT AIR COMPRESSORS FOR AIR BLAST CIRCUIT BREAKERS



ROHE JAB SV225/250-350

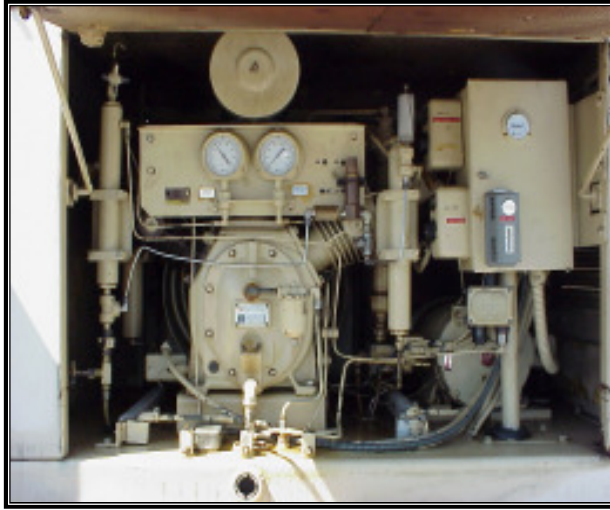


ROHE JAB SV1100/250-350

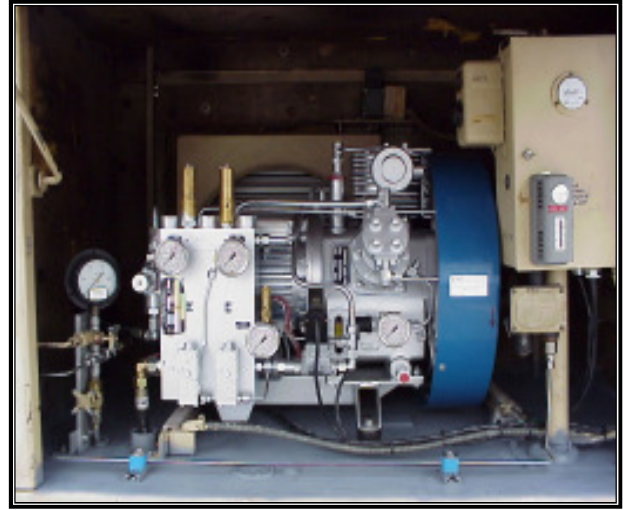
ROHE JAB SV225/250-350 Compressor Specifications		ROHE JAB SV1100/250-350 Compressor Specifications	
Cylinders	3	Cylinders	4
Stages	3	Stages	4
Max. Pressure	5075 PSI	Max. Pressure	5075 PSI
Free Air Delivery	9.2 SCFM	Free Air Delivery	43.5 SCFM
Operating Speed	1725 RPM	Operating Speed	1725 RPM
Oil Capacity	4.0 quarts	Oil Capacity	16 quarts
Length	30 in.	Length	57 in.
Width	25 in.	Width	41 in.
Height	24 in.	Height	53 in.
Weight	370 lbs.	Weight	1,325 lbs.

The SV225/250 Air Compressor has the following specifications: 3 Cylinder, 3 Stage, 9.2 SCFM, available up to 5000 PSIG, 1725 RPM, 10 HP. Includes: Condensate Separators for second and third pressure stage, Unloader, Unloader Timer, Oil Pressure Switch, Heaters with Thermostats. Weight 370 lbs., Length 30 in., Height 24 in., Width 25 in.

REPLACEMENT AIR COMPRESSORS FOR AIR BLAST CIRCUIT BREAKERS



Original Ingersoll-Rand



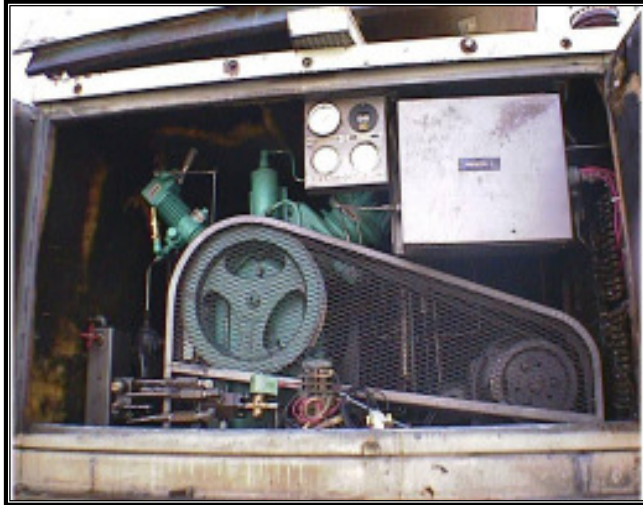
ROHE JAB SV225/250 Retrofit

The SV225/250 retrofit is a cost effective solution to the problems associated with aging compressors on air blast circuit breakers. The above photos were taken at a substation and show an actual before and after. The main characteristics of our air-cooled high pressure model are reliability and longevity. The construction of the compressor, including a high volumetric efficiency and the arrangement of the cylinders directly within the flow of the cooling air, enables you to operate with lower temperatures of compression leading to a long service life of the valves.

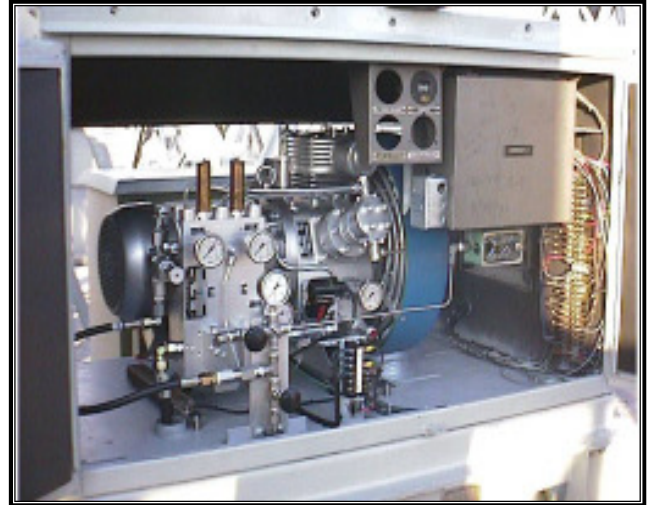
The SV225/250 Air Compressor has the following specifications: 3 Cylinder, 3 Stage, 9 SCFM, available up to 5000 PSIG, 1725 RPM, 10 HP. Includes: Safety Valves and Pressure Gauges for each individual Stage, Unloader, Unloader Timer, Oil Pressure Switch and Gauge, Heaters with Thermostats. Weight 370 lbs., Length 30 in., Height 24 in., Width 25 in.

The advantages of the SV225/250 Retrofit: All new Components, Direct drive, Oil Pressure Lubrication, Large Fan and After Coolers maintain less than 10 degrees C temperature rise.

REPLACEMENT AIR COMPRESSORS FOR PK/ATB/DLF AIR BLAST CIRCUIT BREAKERS



Original Worthington



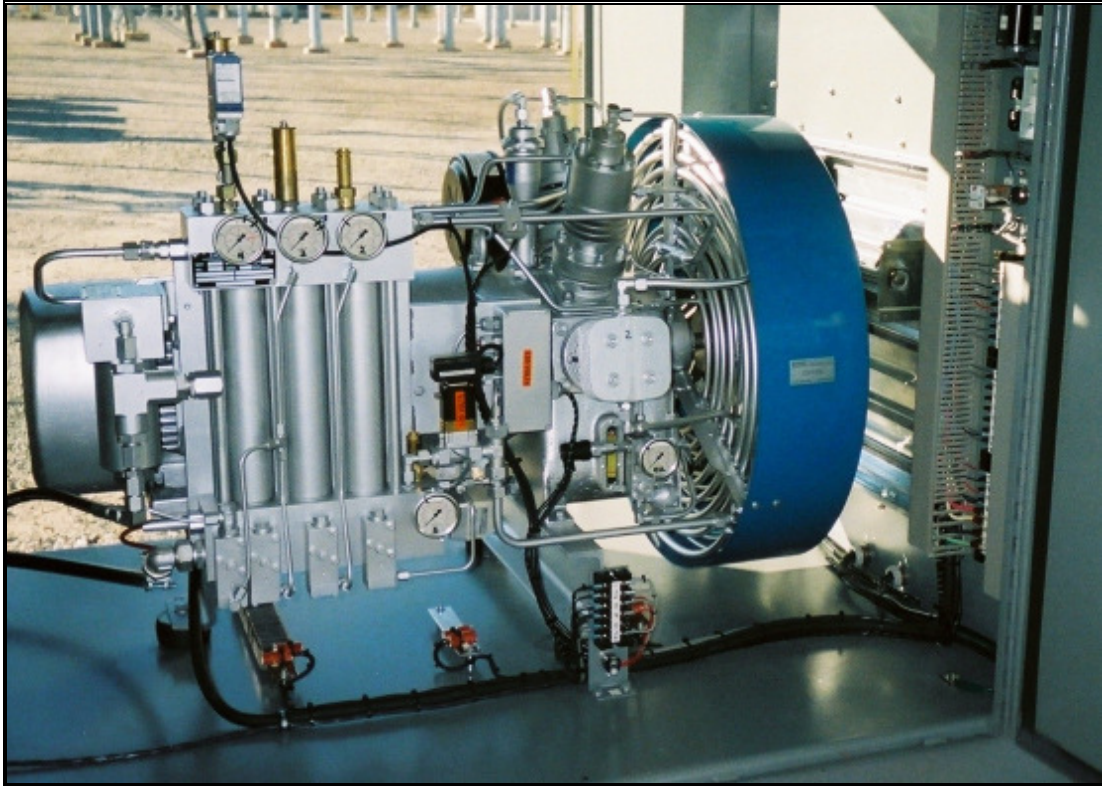
ROHE JAB SV225/250 Retrofit

The SV225/250 retrofit is a cost effective solution to the problems associated with aging compressors on air blast circuit breakers. The above photos were taken at a substation and show an actual before and after. The main characteristics of our air-cooled high pressure model are reliability and longevity. The construction of the compressor, including a high volumetric efficiency and the arrangement of the cylinders directly within the flow of the cooling air, enables you to operate with lower temperatures of compression leading to a long service life of the valves.

The SV225/250 Air Compressor has the following specifications: 3 Cylinder, 3 Stage, 9 SCFM, available up to 5000 PSIG, 1725 RPM, 10 HP. Includes: Safety Valves and Pressure Gauges for each individual Stage, Unloader, Unloader Timer, Oil Pressure Switch and Gauge, Heaters with Thermostats. Weight 370 lbs., Length 30 in., Height 24 in., Width 25 in.

The advantages of the SV225/250 Retrofit: All new Components, Direct drive, Oil Pressure Lubrication, Large Fan and After Coolers maintain less than 10 degrees C temperature rise.

REPLACEMENT AIR COMPRESSORS FOR PK/ATB/DLF AIR BLAST CIRCUIT BREAKERS INSTALLED INSIDE A NEW ROHE CABINET



ROHE JAB SV450/250-350 Compressor Specifications

Cylinders	4
Stages	4
Max. Pressure available	5075 PSI
Free Air Delivery	18.5 SCFM
Operating Speed	1725 RPM
Oil Capacity	10 quarts
Length	46 in.
Width	29 in.
Height	33 in.
Weight	650 lbs.